



# **RC953-8FE16E1**

## **Command line reference**

Software: RC953-8FE16E1\_V1.0.20060623

## Contents

1. Overview .....	5
1.1 Audience .....	5
1.2 Abbreviation .....	5
1.3 Reference .....	5
2. How to use the command-line .....	6
2.1 Environment .....	6
2.2 Command mode .....	6
1.4 Relationship of command modes .....	8
3. System commands .....	9
3.1 clear .....	9
3.2 disable .....	9
3.3 enable .....	10
3.4 end .....	10
3.5 exit .....	11
3.6 help .....	12
3.7 history .....	13
3.8 list .....	14
3.9 logout .....	15
3.10 quit .....	15
3.11 reboot .....	16
3.12 show terminal .....	17
3.13 show version .....	18
3.14 terminal history .....	19
3.15 terminal time-out .....	19
1.5 write .....	20
4. Privileged commands .....	22
4.1 config .....	22
4.2 dir (c:d:) .....	22
4.3 download (system-boot startup-config fpga) (tftp   ftp) .....	23
4.4 erase startup .....	24
4.5 hostname HOSTNAME .....	24
4.6 no hostname .....	25
4.7 ping A.B.C.D .....	25
4.8 reboot .....	26
4.9 show running-config .....	26
4.10 show startup-config .....	27
4.11 show device .....	28
4.12 show interface e1 [<1-16>] .....	29
4.13 show interface ethernet [<1-8>] .....	32
4.14 show ip .....	34
4.15 show rem interfaceconver [{1-16}] .....	35
4.16 show remote interface interfaceconvert <1-16> e1 [<1-8>] .....	36

4.17.	show remote interface ethernet [{1-16}] .....	38
4.18.	upload (system-boot startup-config fpga) (tftp   ftp) .....	40
5.	Configuration mode commands .....	41
5.1.	add channel <1-16> e1 ({1-8} {9-16}) .....	41
5.2.	add map NAME ethernet {1-8} [trunk] [channel {1-16}] .....	41
5.3.	add map NAME trunk [channel {1-16}] .....	41
5.4.	add trunk ethernet {1-8} .....	42
5.5.	err-auto-shutdown <1-16> .....	42
5.6.	gateway A.B.C.D .....	43
5.7.	interface e1 <1-16> .....	43
5.8.	interface ethernet <1-8> .....	44
5.9.	ipaddr A.B.C.D [mask A.B.C.D] .....	44
5.10.	loopback-detection (enable disable) e1-port-list ({1-16} all) .....	45
5.11.	loopback-detection (enable disable) ethernet-port-list ({1-16} all) .....	45
5.12.	mgmt-port <1-8> .....	45
5.13.	modify map NAME trunk [channel {1-16}] .....	46
5.14.	modify map NAME ethernet {1-8} [trunk] [channel {1-16}] .....	46
5.15.	no channel .....	47
5.16.	no err-auto-shutdown <1-16> .....	47
5.17.	no map NAME .....	47
5.18.	No mgmt-port <1-8> .....	48
5.19.	no trunk .....	48
5.20.	no user USERNAME .....	49
5.21.	password .....	49
5.22.	remote interfaceconvert <1-16> .....	50
5.23.	remote (rc952fee1 rc952fxe1 rc953fe8e1 rc953fx8e1) <1-16> .....	51
5.24.	show loopback-detection (ethernet e1) .....	51
5.25.	show map .....	52
5.26.	show user .....	53
5.27.	snmp .....	53
5.28.	user USERNAME password PASSWORD .....	54
5.29.	user USERNAME privilege <1-15> .....	55
6.	Interface E1 commands .....	57
6.1.	bert (enable disable) .....	57
6.2.	clock-mode (master slave) .....	57
6.3.	crc-auto (enable disable) .....	57
6.4.	description STRING .....	58
6.5.	frame .....	58
6.6.	interface e1 <1-16> .....	59
6.7.	loopback .....	59
6.8.	no loopback .....	59
6.9.	no remote-e1-loopback .....	60
6.10.	remote-e1-loopback .....	60
6.11.	remote e1 .....	61
6.12.	show interface [<1-16>] .....	61

6.13.	timeslot {1-31}	62
6.14.	unframe	63
7.	Interface Ethernet mode commands	64
7.1.	flow-control (on off)	64
7.2.	interface ethernet <1-8>	64
7.3.	no shutdown	64
7.4.	reset-statistics	65
7.5.	show interface [<1-8>]	65
7.6.	shutdown	66
7.7.	speed auto	66
7.8.	speed (100 10) duplex (full  half )	67
8.	Remote RC952-FEE1 mode command	68
8.1.	fault-pass (enable disable)	68
8.2.	interface e1	68
8.3.	interface ethernet	68
8.4.	remote interfaceconvert <1-16>	69
8.5.	reset	69
8.6.	show device	70
9.	Commands in interface e1 configuration mode of remote RC952-FEE1	71
9.1.	clock-mode (master slave)	71
9.2.	crc-auto (enable disable)	71
9.3.	show interface	72
10.	Commands in interface Ethernet configuration mode of remote RC952-FEE1	73
10.1.	flow-control (on off)	73
10.2.	no shutdown	73
10.3.	show interface	73
10.4.	shutdown	74
10.5.	speed auto	75
10.6.	speed (100 10) duplex (full  half )	75
11.	Commands in remote RC952-FXE1	76
11.1.	interface e1	76
11.2.	interface fx-ethernet	76
11.3.	remote interfaceconvert <1-16>	76
11.4.	reset	77
11.5.	show device	77
12.	Commands in interface E1 configuration mode of remote RC952-FXE1	79
12.1.	clock-mode (master slave)	79
12.2.	crc-auto (enable disable)	79
12.3.	show interface	80
13.	Commands in interface fx-ethernet configuration mode of remote RC952-FXE1	81
13.1.	flow-control (on off)	81
13.2.	show interface	81
14.	Commands in remote RC953-FE8E1 configuration mode	83
14.1.	fault-pass (enable disable)	83

---

14.2.	interface e1 <1-8> .....	83
14.3.	interface ethernet .....	83
14.4.	remote interfaceconvert <1-16> .....	84
14.5.	reset .....	84
14.6.	show device .....	85
15.	Commands in interface E1 configuration mode of remote RC953-FE8E1 .....	86
15.1.	clock-mode (master slave) .....	86
15.2.	crc-auto (enable disable).....	86
15.3.	show interface .....	87
16.	Commands in interface Ethernet configuration mode of remote RC953-FE8E1	88
16.1.	flow-control (on off) .....	88
16.2.	no shutdown.....	88
16.3.	show interface .....	88
16.4.	shutdown.....	89
16.5.	speed auto .....	90
16.6.	speed (100 10) duplex (full  half ).....	90
17.	Commands in remote RC953-FX8E1 configuration mode .....	91
17.1.	interface e1 <1-8> .....	91
17.2.	interface fx-ethernet .....	91
17.3.	remote interfaceconvert <1-16> .....	92
17.4.	reset .....	92
17.5.	show device .....	92
18.	Commands in interface E1 configuration mode of remote RC953-FX8E1 .....	94
18.1.	clock-mode (master slave) .....	94
18.2.	crc-auto (enable disable).....	94
18.3.	show interface .....	95
19.	Commands in interface fx-ethernet configuration mode of remote RC953-FX8E1	96
19.1.	flow-control (on off) .....	96
19.2.	show interface .....	96
20.	Commands in SNMP configuration mode .....	98
20.1.	show snmp .....	98
20.2.	snmp-server community COMMUNITY (ro/rw).....	98
20.3.	snmp-server contact SYSCONTACT.....	99
20.4.	snmp-server description STRING .....	99
20.5.	snmp-server location SYSLOCATION.....	100
20.6.	snmp-server name SYSNAME.....	100
20.7.	snmp-server trap (enable disable).....	100
20.8.	snmp-server trap <1-8> target TARGET port PORT .....	101

# 1. Overview

## 1.1 Audience

The *RC953-8FE16E1 command reference* is for the networking professional who is responsible for configuring, managing and maintaining Raisecom inverse multiplexers. This guide provides information of command-line interface and the application examples of ISCOM series switches. It includes descriptions of the management interface options and the features supported by the switch software.

## 1.2 Abbreviation

FE:           Fast Ethernet  
GE:           Gigabit Ethernet

## 1.3 Reference

*RC953-8FE16E1 configuration guide200609*

## 2. How to use the command-line

### 2.1. Environment

Hardware environment: RC953-8FE16E1  
Series interface of computer;

Software environment: WIN98/WIN2000  
/WINDOWS XP.

### 2.2. Command mode

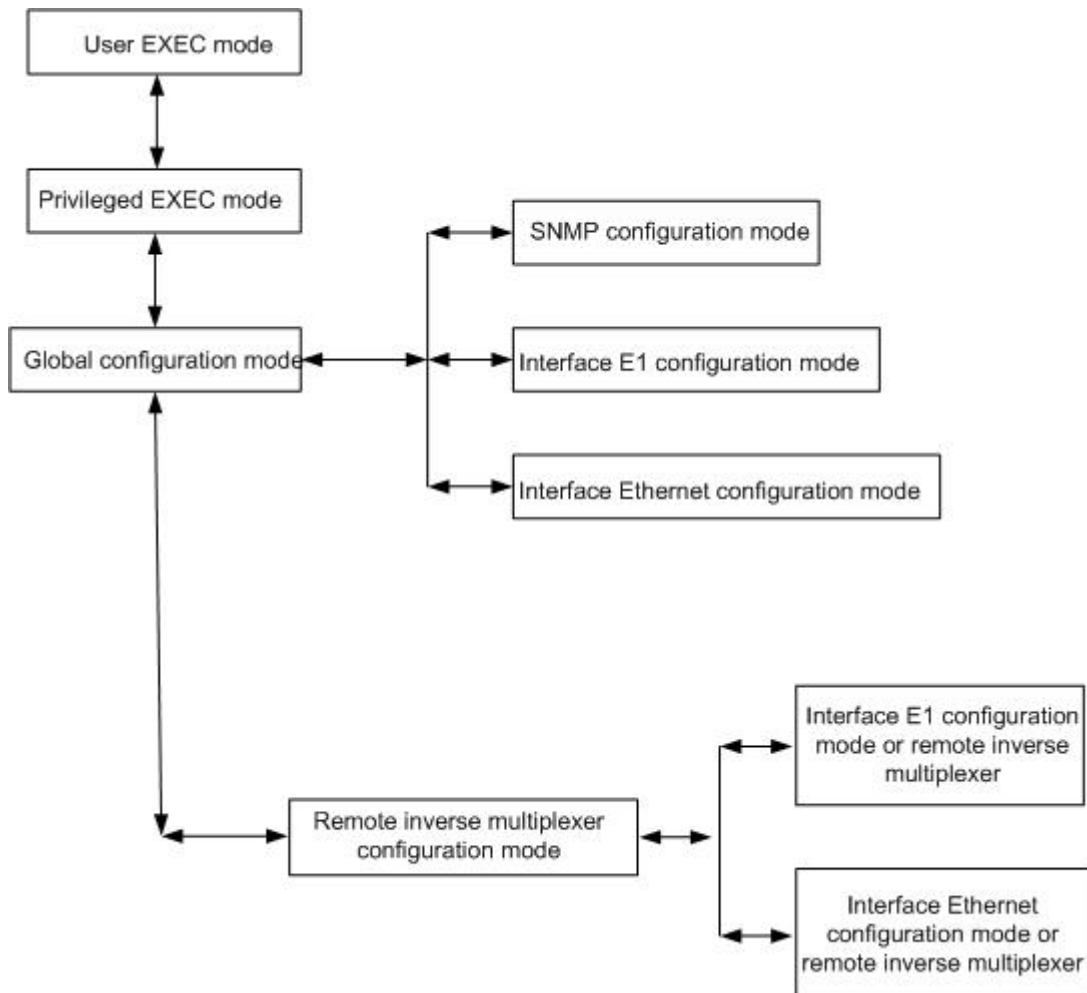
Mode	Access
User EXEC mode	Login
Privileged EXEC mode	In User EXEC mode use <b>enable</b> command to enter Privileged EXEC mode, use <b>disable</b> command to quit to User EXEC mode.
global configuration mode	In Privileged EXEC mode use <b>config</b> command to enter global configuration mode and use <b>exit</b> command to quit to Privileged EXEC mode.
SNMP configuration mode	In global configuration mode use <b>snmp</b> command to enter SNMP configuration mode, use <b>exit</b> command to quit to global configuration mode.
Interface E1 configuration mode	In global configuration mode use <b>interface e1</b> command to enter interface E1 configuration mode, use <b>exit</b> command to quit to global configuration mode.
Interface Ethernet configuration mode	In global configuration mode use <b>interface eth</b> command to enter interface Ethernet configuration mode, use <b>exit</b> command to quit to global configuration mode.
Interfaceconvert mode	In global configuration mode use <b>remote interfaceconvert</b> command to enter remote interfaceconvert (RC952FEE1 or RC952FXE1 mode), use <b>exit</b> command to quit global configuration mode.

Remote RC952FEE1 mode	In global configuration mode use <b>remote rc952fee1</b> command to enter remote RC952FEE1 configuration mode, use <b>exit</b> command to quit to global configuration mode.
interface Ethernet configuration mode of remote RC952FEE1	In remote RC952FEE1 configuration mode, use <b>interface eth</b> command to enter interface Ethernet configuration mode of remote RC952FEE1 configuration mode, use <b>exit</b> command to quit.
interface E1 configuration mode of remote RC952FEE1	In remoter RC952-FEE1 configuration mode, use <b>interface e1</b> command to enter interface E1 configuration mode of remote RC952-FEE1, use <b>exit</b> to quit.
Remote RC952FXE1 configuration mode	In global configuration mode use <b>remote rc952fxe1</b> command enter remote RC952FXE1 configuration mode, use <b>exit</b> command to quit.
interface E1 configuration mode of remote RC952FXE1	In remote RC952FXE1 configuration mode, use <b>interface e1</b> command to enter interface E1 configuration mode of remote RC952FXE1, use <b>exit</b> command to quit
interface fx-ethernet configuration mode of remote RC952FXE1	In remote RC952FXE1 configuration mode, use <b>interface fx-ethernet</b> command to enter interface ethernet configuration mode of remote RC952FXE1, use <b>exit</b> command to quit
Remote RC953FE8E1 configuration mode	In global configuration mode use <b>remote rc953fe8e1</b> command to enter remote RC953FE8E1 configuration mode, use <b>exit</b> command to quit.
interface Ethernet configuration mode of remote RC953FE8E1	In remote RC953FE8E1 configuration mode, use <b>interface eth</b> command to enter interface Ethernet configuration mode of remote RC953FE8E1, use <b>exit</b> command to quit.
interface E1 configuration mode of remote RC953FE8E1	In remote RC953FE8E1 configuration mode, use <b>interface e1</b> command to enter interface E1 configuration mode of remote RC953FE8E1, use <b>exit</b> command to quit.
Remote RC953FX8E1 configuration mode	In global configuration mode use <b>remote rc953fx8e1</b> command to enter remote RC953FE8E1 configuration mode, use <b>exit</b> command to quit.



<p>interface fx-ethernet configuration mode of remote RC953FX8E1</p>	<p>In remote RC953FE8E1 configuration mode, use <b>interface fx-ethernet</b> command to enter interface Ethernet configuration mode of remote RC953FX8E1, use <b>exit</b> command to quit.</p>
<p>interface E1 configuration mode of remote RC953FX8E1</p>	<p>In remote RC953FE8E1 configuration mode, use <b>interface e1</b> command to enter interface E1 configuration mode of remote RC953FX8E1, use <b>exit</b> command to quit.</p>

### 1.4 Relationship of command modes



## 3. System commands

### 3.1. clear

[Function explanation]

Clear all the information on the screen.

**clear**

[Parameter explanation]

N/A

[Command mode]

All command modes of RC953-8FE16E1

[Application guide]

N/A

[Explanation of command execution echo]

N/A

[Example]

- Raisecom> clear

[Related command]

N/A

### 3.2. disable

[Function explanation]

Use **disable** command to quit to Privileged EXEC mode.

**disable**

[Parameter explanation]

N/A

[Command mode]

Privileged EXEC mode.

[Application guide]

Use **disable** command to quit to Privileged EXEC mode.

[Explanation of command execution echo]

[Example]

- Raisecom#disable

[Related command]

command	description
<b>enable</b>	From User EXEC mode to enter Privileged EXEC mode

### 3.3. enable

[Function explanation]

Use **enable** command to enter Privileged EXEC mode .

**enable**

[Paramter explanation]

N/A

[Command mode]

User EXEC mode.

[Application guide]

From User EXEC mode to Privileged EXEC mode.

[Explanation of command execution echo]

N/A

[Example]

- Raisecom>enable  
Password:

[Related command]

command	description
<b>disable</b>	Exit from Privileged EXEC mode to User EXEC mode

### 3.4. end

[Function explanation]

Use end command to quit to privileged EXEC mode.

[Paramter explanation]

N/A

[Command mode]

Interface E1 configuration mode ; interface Ethernet configuration mode ; SNMP configuration mode ;Remote RC952-FEE1 configuration mode; Interface E1 configuration mode of remote RC952-FEE1;Interface Ethernet configuration mode of remote RC952-FEE1; Remote RC952-FXE1 configuration mode; Interface E1 configuration mode of remote RC952-FXE1; Interface Ethernet configuration mode of remote RC952-FXE1; Remote RC953-FE8E1 configuration mode; Interface E1 configuration mode of remote RC953-FE8E1; Interface Ethernet configuration mode of remote RC953-FE8E1; Remote RC953-FX8E1 configuration mode ;Interface E1

configuration mode of remote RC953-FX8E1 ;Interface Ethernet configuration mode of remote RC953-FX8E1.

[Application guide]

N/A

[Example]

- Raisecom#**end**

[Related command]

### 3.5. exit

[Function explanation]

Use **exit** command to get back to previous command mode or logout.

**exit**

[Parameter explanation]

N/A

[Command mode]

User EXEC mode, Privileged EXEC mode, Global configuration mode; interface E1 configuration mode ; interface Ethernet configuration mode ; SNMP configuration mode ;Remote RC952-FEE1 configuration mode; Remote RC952-FEE1 configuration mode 下 interface E1 configuration mode ; Remote RC952-FEE1 configuration mode 下 interface Ethernet configuration mode ; Remote RC952-FXE1 configuration mode; Interface E1 configuration mode of remote RC952-FXE1; Interface Ethernet configuration mode of remote RC952-FXE1; Remote RC953-FE8E1 configuration mode; Interface E1 configuration mode of remote RC953-FE8E1; Interface Ethernet configuration mode of remote RC953-FE8E1; Remote RC953-FX8E1 configuration mode ;Interface E1 configuration mode of remote RC953-FX8E1 ;Interface Ethernet configuration mode of remote RC953-FX8E1 ; .

[Application guide]

In use EXEC mode and privileged EXEC mode use this command to logout. And in other command mode, use this command to get back to previous command mode

[Explanation of command execution echo]

N/A

[Example]

- Raisecom>exit

[Related command]

command	description
quit	Get back to previous command mode or logout.

### 3.6. help

[Function explanation]

Use this command how system help information.

**help**

[Paramter explanation]

N/A

[Command mode]

User EXEC mode; Privileged EXEC mode; Global configuration mode; Global configuration mode ; interface E1 configuration mode ; interface Ethernet configuration mode ; SNMP configuration mode ;Remote RC952-FEE1 configuration mode; Remote RC952-FEE1 configuration mode 下 interface E1 configuration mode ; Remote RC952-FEE1 configuration mode 下 interface Ethernet configuration mode ; Remote RC952-FXE1 configuration mode; Interface E1 configuration mode of remote RC952-FXE1; Interface Ethernet configuration mode of remote RC952-FXE1; Remote RC953-FE8E1 configuration mode; Interface E1 configuration mode of remote RC953-FE8E1; Interface Ethernet configuration mode of remote RC953-FE8E1; Remote RC953-FX8E1 configuration mode ;Interface E1 configuration mode of remote RC953-FX8E1 ;Interface Ethernet configuration mode of remote RC953-FX8E1 ; ; 普通用户, 特权用户.

[Application guide]

Use this command how system help information.

[Explanation of command execution echo]

ROSE software provides advanced help feature. When you need help, anytime at the command line please press '?'.  
 If nothing matches, the help list will be empty and you must backup until entering a '?' shows the available options.

Two styles of help are provided:

Two styles of help are provided:

1. Full help is available when you are ready to enter a command argument (e.g. 'show ?') and describes each possible argument.

2. Partial help is provided when an abbreviated argument is entered and you want to know what arguments match the input (e.g. 'show me?').

[Example]

- Raisecom>help

[Related command]

### 3.7. history

[Function explanation]

Use this command to show history entered commands

**history**

[Parameter explanation]

N/A

[Default status]

There are 20 history commands saved by the device by default.

[Command mode]

User EXEC mode, Privileged EXEC mode, Global configuration mode; interface E1 configuration mode ; interface Ethernet configuration mode ; SNMP configuration mode ; Remote RC952-FEE1 configuration mode; Remote RC952-FEE1 configuration mode  
└─ interface E1 configuration mode ; Remote RC952-FEE1 configuration mode  
└─ interface Ethernet configuration mode ; Remote RC952-FXE1 configuration mode;  
Interface E1 configuration mode of remote RC952-FXE1; Interface Ethernet configuration mode of remote RC952-FXE1; Remote RC953-FE8E1 configuration mode; Interface E1 configuration mode of remote RC953-FE8E1; Interface Ethernet configuration mode of remote RC953-FE8E1; Remote RC953-FX8E1 configuration mode; Interface E1 configuration mode of remote RC953-FX8E1 ; Interface Ethernet configuration mode of remote RC953-FX8E1 ; .

[Application guide]

Use this command to show history entered commands

[Explanation of command execution echo]

```
ter time-out 65535
enable
chin
```

enable  
 help  
 eng

[Example]

- Raisecom>history

[Related command]

command	description
<b>terminal history</b>	Change the history command number that will be saved in the memory.

### 3.8. list

[Function explanation]

Use this command to show all the commands in one command mode.

**list**

[Paramter explanation]

N/A

[Command mode]

User EXEC mode, Privileged EXEC mode, Global configuration mode; interface E1 configuration mode ; interface Ethernet configuration mode ; SNMP configuration mode ;Remote RC952-FEE1 configuration mode; Remote RC952-FEE1 configuration mode 下 interface E1 configuration mode ; Remote RC952-FEE1 configuration mode 下 interface Ethernet configuration mode ; Remote RC952-FXE1 configuration mode; Interface E1 configuration mode of remote RC952-FXE1; Interface Ethernet configuration mode of remote RC952-FXE1; Remote RC953-FE8E1 configuration mode; Interface E1 configuration mode of remote RC953-FE8E1; Interface Ethernet configuration mode of remote RC953-FE8E1; Remote RC953-FX8E1 configuration mode ;Interface E1 configuration mode of remote RC953-FX8E1 ;Interface Ethernet configuration mode of remote RC953-FX8E1 ; .

[Application guide]

N/A.

[Explanation of command execution echo]

clear  
 enable

exit  
help  
history  
list  
quit  
terminal history <1-20>  
terminal time-out <0-65535>

[Example]

- Raisecom>list

[Related command]

### 3.9. logout

[Function explanation]

Use this command to logout.

**Logout**

[Parameter explanation]

N/A

[Command mode]

Privileged EXEC mode.

[Application guide]

Use this command to logout and users need to enter the user name and password for a new entry.

[Explanation of command execution echo]

[Example]

- Raisecom#logout

[Related command]

### 3.10. quit

[Function explanation]



Use this command to get back to previous command mode or logout.

### quit

[Parameter explanation]

N/A

[Command mode]

User EXEC mode, Privileged EXEC mode, Global configuration mode; interface E1 configuration mode ; interface Ethernet configuration mode ; SNMP configuration mode ; Remote RC952-FEE1 configuration mode; Remote RC952-FEE1 configuration mode 下 interface E1 configuration mode ; Remote RC952-FEE1 configuration mode 下 interface Ethernet configuration mode ; Remote RC952-FXE1 configuration mode; Interface E1 configuration mode of remote RC952-FXE1; Interface Ethernet configuration mode of remote RC952-FXE1; Remote RC953-FE8E1 configuration mode; Interface E1 configuration mode of remote RC953-FE8E1; Interface Ethernet configuration mode of remote RC953-FE8E1; Remote RC953-FX8E1 configuration mode ;Interface E1 configuration mode of remote RC953-FX8E1 ;Interface Ethernet configuration mode of remote RC953-FX8E1 ; .

[Application guide]

In User EXEC mode and Privileged EXEC mode use this command to logout;  
In other command modes, use this command to exit to previous command mode.

[Explanation of command execution echo]

N/A

[Example]

- Raisecom>quit

[Related command]

command	description
exit	Get back to previous command mode or logout

## 3.11. reboot

[Function explanation]

Use this command to restart the device

### reboot

[Parameter explanation]

N/A

[Command mode]

Privileged EXEC mode

[Application guide]

Use this command to restart the device, you need to enter “yes” to confirm.

[Explanation of command execution echo]

[Example]

- Raisecom#reboot  
Please input 'yes' to confirm:yes  
Rebooting ...

[Related command]

### 3.12. show terminal

[Function explanation]

Use this command to check the information of the users who logon the device at present.

**show terminal**

[Parameter explanation]

N/A

[Command mode]

Privileged EXEC mode.

[Application guide]

Use this command to check the information of the users who logon the device at present, there is one CONSOLE logon user and 5 Telnet logon users.

[Explanation of command execution echo]

[Example]

- Raisecom#**show terminal**

terminal	state	time-out	user
-----			
console	active	600sec	rc3026
telnet-1	inactive	-	-

telnet-2	inactive	-	-
telnet-3	inactive	-	-
telnet-4	inactive	-	-
telnet-5	inactive	-	-

[Related command]

### 3.13. show version

[Function explanation]

Use this command to show the version information of the device.

[Parameter explanation]

N/A

[Command mode]

Privileged EXEC mode.

[Application guide]

Use this command to show both the software and hardware version information

[Explanation of command execution echo]

[Example]

```
raisecom#show version
```

```
RaiseCom Operating System Software
```

```
Copyright(c) 2001-2005 by Raisecom Science & Technology CO., LTD.
```

```
Product name: RC951-8FE16E1
```

```
RaiseComOS Software Version compiled Nov 22 2005, 18:09:52
```

```
Device Version A.3-1.10-1.0
```

```
RC951-8FE16E1 with
```

```
CPU:SAMSUNG ARM----S3C4510B
```

```
16M bytes DRAM
```

```
2M bytes Flash Memory
```

```
Base Ethernet MAC address:00:80:92:33:12:53
```

```
System up time:0 days 6 hours 22 minutes 23 seconds
```

[Related command]

### 3.14. terminal history

[Function explanation]

Use this command to change the history command number.

**terminal history** <1-20>

[Parameter explanation]

- **history** key word of history command number configuration command
- <1-20> history command number

[Default status]

There are 20 history command saved by device by default.

[Command mode]

User EXEC mode.

[Application guide]

Use this command to change the history command number.

[Explanation of command execution echo]

set successfully.

Information showed when command is executed successfully

[Example]

- Raisecom>terminal history 10

[Related command]

command	description
history	Show entered history commands in one command mode

### 3.15. terminal time-out

[Function explanation]

Set maximum value of terminal time-out

**terminal time-out** <0-65535>

[Parameter explanation]

- **time-out** the configuration information when terminal logout because of time-out.
- <0-65535> time-out value, unit is second

[Default status]

Default value of time-out is 600s.

[Command mode]

User EXEC mode.

[Application guide]

Set maximum value of terminal time-out

[Explanation of command execution echo]

set successfully.

Information showed when set the value of time-out successfully

[Example]

Raisecom> **terminal time-out** 1000

[Related command]

command	description
show	Show end user information
terminal	

## 1.5 write

[Function explanation]

Save present configuration information

[Paramter explanation]

N/A

[Command mode]

Privileged EXEC mode, Global configuration mode; interface E1 configuration mode ; interface Ethernet configuration mode ; SNMP configuration mode ;Remote RC952-FEE1 configuration mode; Remote RC952-FEE1 configuration mode 下 interface E1 configuration mode ; Remote RC952-FEE1 configuration mode 下 interface Ethernet configuration mode ; Remote RC952-FXE1 configuration mode; Interface E1 configuration mode of remote RC952-FXE1; Interface Ethernet configuration mode of remote RC952-FXE1; Remote RC953-FE8E1 configuration mode; Interface E1 configuration mode of remote RC953-FE8E1; Interface Ethernet configuration mode of remote RC953-FE8E1; Remote RC953-FX8E1 configuration mode ;Interface E1 configuration mode of remote RC953-FX8E1 ;Interface Ethernet

configuration mode of remote RC953-FX8E1 ; .

[Application guide]

Use this command to save present configuration information and system will load the saved configuration information automatically when restart.

[Explanation of command execution echo]

Successfully write to flash

Information showed when set the command successfully.

Fail write to flash!

Information showed when set the command unsuccessfully.

[Example]

- Raisecom#**write**  
Writing running-config to flash, please wait...  
Successfully write to flash

[Related command]

## 4. Privileged commands

### 4.1. config

[Function explanation]

Enter global configuration mode .

[Paramter explanation]

[Default status]

[Command mode]

Privileged EXEC mode;.

[Application guide]

[Explanation of command execution echo]

[Example]

- Raisecom# **config**

[Related command]

### 4.2. dir (c:|d:)

[Function explanation]

dir

[Paramter explanation]

c: for system files.

d: for configuration files.

[Command mode]

Privileged EXEC mode.

[Application guide]

Show all the files saved in the device

[Explanation of command execution echo]

[Example]

- Raisecom# show d:

size	date	time	name
254	Jan-01-1980	00:00:00	hostconf.txt
1336	Jan-01-1980	00:00:00	system.conf
73	Jan-01-1980	00:00:00	usercfg.txt
7680	Jan-01-1980	00:00:00	slotconf.conf

[Related command]

### 4.3. download (system-boot|startup-config|fpga) (tftp | ftp)

[Function explanation]

Download the system or configuration files from assigned FTP or TFTP

[Paramter explanation]

system-boot: system file  
 startup-config: configuration file  
 fpga: FPGA file

[Command mode]

Privileged EXEC mode.

[Application guide]

The file name of the downloaded file should be the same with the files names in the flash.

[Example]

Raisecom# download system-boot ftp

Please input server IP Address:1.0.0.1  
 Please input FTP User name:test  
 Please input FTP Password:test  
 Please input FTP Server File Name:system\_boot.Z

Raisecom# download startup-config tftp

Please input server IP Address:1.0.0.1  
 Please input TFTP port(default 69):  
 Please input TFTP Server File Name:start\_config.conf  
 Loading, please wait... file length = 3574927  
 Writing to flash, please wait...  
 .....finished



You've successfully download new image file  
Now you can type reboot command to reboot system.

#### 4.4. erase startup

[Function explanation]

erase startup

[Paramter explanation]

N/A

[Command mode]

Privileged EXEC mode.

[Application guide]

Delete the configuration file

[Explanation of command execution echo]

[Example]

- Raisecom# erase startup

[Related command]

#### 4.5. hostname HOSTNAME

[Function explanation]

Configure the host name

[Paramter explanation]

[Command mode]

Privileged EXEC mode.

[Application guide]

N/A

[Explanation of command execution echo]

[Example]

- Raisecom# hostname RC951
- RC951#

[Related command]

## 4.6. no hostname

[Function explanation]

Restore the host name to default "raisecom"

[Parameter explanation]

[Command mode]

Privileged EXEC mode.

[Application guide]

N/A

[Explanation of command execution echo]

[Example]

- RC951#no hostname
- Raisecom#

[Related command]

## 4.7. ping A.B.C.D

[Function explanation]

Use this command to check the connection

[Parameter explanation]

N/A

[Command mode]

Privileged EXEC mode.

[Application guide]

[Explanation of command execution echo]

192.168.223.64 is alive

[Example]

- Raisecom#**ping 192.168.223.64**

[Related command]

## 4.8. reboot

[Function explanation]

Restart the device

[Parameter explanation]

N/A

[Command mode]

Privileged EXEC mode.

[Application guide]

Restart the device

[Explanation of command execution echo]

Please input 'yes' or 'y' to confirm:

[Example]

- Raisecom#**reboot**

[Related command]

## 4.9. show running-config

[Function explanation]

Show current configuration information

**show running-config**

[Parameter explanation]

N/A

[Default status]

N/A

[Command mode]  
Privileged EXEC mode.

[Application guide]  
N/A

[Explanation of command execution echo]  
N/A

[Example]

- show current configuration information  
Raisecom # **show running-config**  
current running configuration :  
!snmp  
snmp-server community public ro  
snmp-server community 1 rw  
snmp-server trap 1 target 192.168.0.154 port 162  
snmp-server trap enable  
snmp-server name RC951  
snmp-server contact raisecom  
snmp-server location haitai  
snmp-server description RC951  
!  
!config  
add map 1 ethernet 1-8 e1 1-16  
mgmt-port 6  
!  
!config  
ipaddr 192.168.0.99 mask 255.255.255.0  
gateway 192.168.0.1  
!  
!config  
!interface e1 1  
clock-mode master  
crc-auto disable  
flow-control off  
unframe  
.....

[Related command]

## 4.10. show startup-config

[Function explanation]

Show initial configuration information

**show startup-config**

[Parameter explanation]

N/A

[Default status]

N/A

[Command mode]

Privileged EXEC mode.

[Application guide]

N/A

[Explanation of command execution echo]

N/A

[Example]

- Show initial configuration information.

Raisecom # **show startup-config**

current running configuration :

!view

!

!enable

!

!config

!

interface eth 1

!interface

interface eth 2

!interface

.....

[Related command]

## 4.11. show device

[Function explanation]

show device

[Parameter explanation]

[Command mode]  
Privileged EXEC mode.

[Application guide]  
Show the basic information of the device

[Explanation of command execution echo]

[Example]  
raisecom(config)#show device  
Device type:RC951-8FE16E1  
E1 interface type:Unbalance  
Power Type:AC 220V  
  
Power1:  
Power Status:Normal  
Power2:  
Power Status:Normal

[Related command]

## 4.12. show interface e1 [<1-16>]

[Function explanation]  
Show the E1 interface status

[command mode]  
show interface e1 [<1-16>]

[Parameter explanation]

[Default status]

N/A

[Command mode]  
Global configuration mode ; User EXEC mode; Privileged EXEC mode

[Explanation of command execution echo]  
RAISECOM(config-e1/1)# show interface e1 1-4

E1:1  
Basic Info:  
Clock Mode:slave  
Frame Mode:unframed

Frame timeslot:n/a  
Frame CRC State:enable  
Frame CRC Autonegotiation:disable  
Flow control:OFF

Maintenance:  
Loopback(config):disable  
remote-e1-loopback(config):disable  
Bert:enable

Packet Statistics:  
TX Packet Number:16777215  
RX Packet Number:16777215  
RX Error Packet Number:255

Performance Statistics:  
Error Second:15  
Serial Error Second:15  
Bit Error Rate: thousandth

Fault State:  
LOS:Failure  
AIS:Failure  
LOF:Failure  
CRC:Failure

#### E1:2

Basic Info:  
Clock Mode:slave  
Frame Mode:unframed  
Frame timeslot:n/a  
Frame CRC State:enable  
Frame CRC Autonegotiation:disable

Maintenance:  
Loop Back:enable  
Lineloop:disable  
Bert:enable

Packet Statistics:  
TX Packet Number:16777215  
RX Packet Number:16777215  
RX Error Packet Number:255

## Performance Statistics:

Error Second:15  
Serial Error Second:15  
Bit Error Rate: thousandth

## Fault State:

LOS:Failure  
AIS:Failure  
LOF:Failure  
CRC:Failure

## E1:3

## Basic Info:

Clock Mode:slave  
Frame Mode:unframed  
Frame timeslot:n/a  
Frame CRC State:enable  
Frame CRC Autonegotiation:disable

## Maintenance:

Loop Back:enable  
Lineloop:disable  
Bert:enable

## Packet Statistics:

TX Packet Number:16777215  
RX Packet Number:16777215  
RX Error Packet Number:255

## Performance Statistics:

Error Second:15  
Serial Error Second:15  
Bit Error Rate: thousandth

## Fault State:

LOS:Failure  
AIS:Failure  
LOF:Failure  
CRC:Failure

## E1:4

## Basic Info:

Clock Mode:slave  
Frame Mode:unframed



Frame timeslot:n/a  
Frame CRC State:enable  
Frame CRC Autonegotiation:disable

Maintenance:

Loop Back:enable  
Lineloop:disable  
Bert:enable

Packet Statistics:

TX Packet Number:16777215  
RX Packet Number:16777215  
RX Error Packet Number:255

Performance Statistics:

Error Second:15  
Serial Error Second:15  
Bit Error Rate: thousandth

Fault State:

LOS:Failure  
AIS:Failure  
LOF:Failure  
CRC:Failure

#### 4.13. show interface ethernet [<1-8>]

[Function explanation]

Show the status of Ethernet interface

[Command mode]

show interface ethernet [<1-8>]

[Paramter explanation]

[Default status]

N/A

[Command mode]

User EXEC mode; Privileged EXEC mode; Global configuration mode;

[Explanation of command execution echo]

RAISECOM# show interface ethernet 1-4

Port 1:

Basic Info:

Linkstatus:down

speed-duplex: 10M-half

Manage port:On

Config Info:

Port Switch:On

Auto negotiate:enable

speed-duplex: 10M-half

auto-MDIX:enable

flowcontrol:ON

Performance Statistics:

TX Packet Number:0

TX Bytes Number:0

RX Packet Number:0

RX Bytes Number:0

RX Lost Packet Number:0

Collision Number:0

Port 2:

Basic Info:

Linkstatus:down

speed-duplex: 10M-half

Manage port:On

Config Info:

Port Switch:On

Auto negotiate:enable

speed-duplex: 10M-half

auto-MDIX:enable

flowcontrol:ON

Performance Statistics:

TX Packet Number:0

TX Bytes Number:0

RX Packet Number:0

RX Bytes Number:0

RX Lost Packet Number:0

Collision Number:0

Port 3:

Basic Info:

Linkstatus:down

speed-duplex: 10M-half

Manage port:On

Config Info:

Port Switch:On

Auto negotiate:enable  
speed-duplex: 10M-half  
auto-MDIX:enable  
flowcontrol:ON

Performance Statistics:

TX Packet Number:0  
TX Bytes Number:0  
RX Packet Number:0  
RX Bytes Number:0  
RX Lost Packet Number:0  
Collision Number:0

Port 4:

Basic Info:

Linkstatus:down  
speed-duplex: 10M-half  
Manage port:On

Config Info:

Port Switch:On  
Auto negotiate:enable  
speed-duplex: 10M-half  
auto-MDIX:enable  
flowcontrol:ON

Performance Statistics:

TX Packet Number:0  
TX Bytes Number:0  
RX Packet Number:0  
RX Bytes Number:0  
RX Lost Packet Number:0  
Collision Number:0

## 4.14. show ip

[Function explanation]

Show the IP address, mask and gateway of the device.

[Paramter explanation]

N/A

[Command mode]

User EXEC mode, Privileged EXEC mode.

[Application guide]

Show the IP address, mask and gateway of the device.

[Explanation of command execution echo]

```
IP      Addr: 192.168.223.64
subnet  Mask: 255.255.255.0
GATEWAY Addr: 192.168.223.1
```

[Example]

- Raisecom#**show ip**

[Related command]

## 4.15. show rem interfaceconver [{1-16}]

[Function explanation]

Show the information of remote interface converter

[Command mode]

```
show rem interfaceconver [{1-16}]
```

[Parameter explanation]

[Default status]

N/A

[Command mode]

User EXEC mode; Privileged EXEC mode; Global configuration mode;

[Explanation of command execution echo]

```
RAISECOM(config-remote-e1)# show rem interfaceconver
Device 1:RC952FXE1
Device 2:RC952FXE1
Device 3:RC952FXE1
Device 4:RC952FXE1
Device 5:RC952FXE1
Device 6:RC952FXE1
Device 7:RC952FXE1
Device 8:RC952FXE1
Device 9:RC952FXE1
Device 10:RC952FXE1
Device 11:RC952FXE1
Device 12:RC952FXE1
Device 13:RC952FXE1
Device 14:RC952FXE1
```

Device 15:RC952FXE1

Device 16:RC952FXE1

#### 4.16. show remote interface interfaceconvert <1-16> e1

[<1-8>]

[Function explanation]

Show E1 interface status of remote interface converter

[Command mode]

Show remote interface interfaceconvert <1-16> e1 [<1-8>]

[Paramter explanation]

[Default status]

N/A

[Command mode]

User EXEC mode; Privileged EXEC mode; Global configuration mode;

[Explanation of command execution echo]

Device 1:RC953FX8E1 E1port-1

Basic Running Info:

Clock Mode:master

Frame Mode:framed

Frame timeslot:0-31

Frame CRC autonegotiation:enable

Frame CRC Check:enable

Basic Config Info:

Clock Mode:master

Frame Mode:framed

Frame timeslot:n/a

Frame CRC autonegotiation:enable

Packet Statistics:

TX Packet Number:24628

RX Packet Number:2287

RX Error Packet Number:11

Fault State:

LOS:Normal

AIS:Normal

LOF:Normal

CRC:Normal

Device 1:RC953FX8E1 E1port-2

Basic Running Info:

Clock Mode:master  
Frame Mode:framed  
Frame timeslot:0-31  
Frame CRC autonegotiation:enable  
Frame CRC Check:enable

Basic Config Info:

Clock Mode:master  
Frame Mode:framed  
Frame timeslot:n/a  
Frame CRC autonegotiation:enable

Packet Statistics:

TX Packet Number:18444  
RX Packet Number:2067  
RX Error Packet Number:9

Fault State:

LOS:Normal  
AIS:Normal  
LOF:Normal  
CRC:Normal

Device 1:RC953FX8E1 E1port-3

Basic Running Info:

Clock Mode:master  
Frame Mode:framed  
Frame timeslot:0-31  
Frame CRC autonegotiation:enable  
Frame CRC Check:enable

Basic Config Info:

Clock Mode:master  
Frame Mode:framed  
Frame timeslot:n/a  
Frame CRC autonegotiation:enable

Packet Statistics:

TX Packet Number:24613  
RX Packet Number:2275  
RX Error Packet Number:10

.....

## 4.17. show remote interface ethernet [{1-16}]

Show the status of remote Ethernet interface

[Command mode]

show remote interface ethernet [<1-16>]

[Parameter explanation]

[Default status]

N/A

[Command mode]

User EXEC mode; Privileged EXEC mode; Global configuration mode;

[Explanation of command execution echo]

RAISECOM(config)# show remote interface ethernet 1-4

Port 1:RC952FEE1

Basic Info:

Port:Disable

Linkstatus:Down

Autonegotiation:disable

speed-duplex: 10M-half

flowcontrol:OFF

Config Info:

Port:Disable

Speed:10M

Duplex:half

flowcontrol:OFF

Ethernet Performance Statistics:

TX Packet Number:0

RX Packet Number:0

RX Error Packet Number:0

Port 2:RC952FEE1

Basic Info:

Port:Disable

Linkstatus:Down

Autonegotiation:disable

speed-duplex: 10M-half

flowcontrol:OFF

Config Info:

Port:Disable

Speed:10M

Duplex:half

flowcontrol:OFF

Ethernet Performance Statistics:

TX Packet Number:0

RX Packet Number:0

RX Error Packet Number:0

Port 3:RC952FEE1

Basic Info:

Port:Disable

Linkstatus:Down

Autonegotiation:disable

speed-duplex: 10M-half

flowcontrol:OFF

Config Info:

Port:Disable

Speed:10M

Duplex:half

flowcontrol:OFF

Ethernet Performance Statistics:

TX Packet Number:0

RX Packet Number:0

RX Error Packet Number:0

Port 4:RC952FEE1

Basic Info:

Port:Disable

Linkstatus:Down

Autonegotiation:disable

speed-duplex: 10M-half

flowcontrol:OFF

Config Info:

Port:Disable

Speed:10M

Duplex:half

flowcontrol:OFF

Ethernet Performance Statistics:

TX Packet Number:0

RX Packet Number:0

RX Error Packet Number:0



## 4.18. upload (system-boot|startup-config|fpga) (tftp | ftp)

[Function explanation]

Upload files to assigned server.

[Parameter explanation]

FILENAME: file name that will be uploaded

[Command mode]

Privileged EXEC mode.

[Application guide]

Upload files to assigned server.

[Example]

Raisecom#upload system-boot ftp

Please input server IP Address:1.0.0.1

Please input FTP User name:test

Please input FTP Password:test

Please input FTP Server File Name:system\_boot.Z

Raisecom # upload startup-config tftp

Please input server IP Address:1.0.0.1

Please input TFTP port(default 69):

Please input TFTP Server File Name:start\_config.conf

## 5. Configuration mode commands

### 5.1. add channel <1-16> e1 ({1-8}){9-16}

[Function explanation]

Create a transmission channel

[Command mode]

```
add channel <1-16> e1 ({1-8}){9-16}
```

[Parameter explanation]

[Default status]

N/A

[Command mode]

Global configuration mode

[Explanation of command execution echo]

```
raisecom(config)#add channel 2 e1 1-4  
set command success.
```

### 5.2. add map NAME ethernet {1-8} [trunk] [channel {1-16}]

创建 map.

[Command mode]

```
add map NAME ethernet {1-8} [trunk] [channel {1-16}]
```

[Parameter explanation]

[Default status]

N/A

[Command mode]

Global configuration mode

[Explanation of command execution echo]

```
RAISECOM(config)# add map abc ethernet 1 trunk channel 2  
set command success.
```

### 5.3. add map NAME trunk [channel {1-16}]

[Function explanation]

Create a map between trunk interface transmission channel.

[Command mode]

```
add map NAME trunk [channel {1-16}]
```

[Parameter explanation]

[Default status]

N/A

[Command mode]

Global configuration mode

[Explanation of command execution echo]

RAISECOM(config)# add map abc trunk channel 2  
set command success.

## 5.4. add trunk ethernet {1-8}

[Function explanation]

Create a trunk interface

[Command mode]

add trunk ethernet {1-8}

[Parameter explanation]

[Default status]

N/A

[Command mode]

Global configuration mode

[Explanation of command execution echo]

raisecom(config)#add trunk ethernet 3-4  
set command success.

## 5.5. err-auto-shutdown <1-16>

[Function explanation]

Configure the error bit auto shutdown function (the transmission channel will be shutdown automatically if the error bit exceeds the threshold),

[Command mode]

err-auto-shutdown <1-16>

[Parameter explanation]

[Default status]

N/A

[Command mode]

Global configuration mode

[Explanation of command execution echo]

raisecom(config)#err-auto-shutdown 1  
set command success.

## 5.6. gateway A.B.C.D

[Function explanation]

Configure the system gateway

[Parameter explanation]

N/A

[Command mode]

Privileged EXEC mode.

[Application guide]

Configure the system gateway

[Explanation of command execution echo]

set command success

please execute "write" to save!

[Example]

- Raisecom# **gateway 192.168.223.1**

[Related command]

## 5.7. interface e1 <1-16>

[Function explanation]

Enter interface E1 configuration mode

[Command mode]

interface e1 <1-16>

[Parameter explanation]

[Default status]

N/A

[Command mode]

Global configuration mode

[Explanation of command execution echo]

RAISECOM(config)#interface e1 2

RAISECOM(config-E1/2)#

## 5.8. interface ethernet <1-8>

[Function explanation]

Enter interface Ethernet configuration mode

[Command mode]

interface ethernet <1-8>

[Paramter explanation]

[Default status]

N/A

[Command mode]

Global configuration mode

[Explanation of command execution echo]

RAISECOM(config)# interface ethernet 2

RAISECOM(conifg-ethernet/2)#

## 5.9. ipaddr A.B.C.D [mask A.B.C.D]

[Function explanation]

Configure the IP address and mask of the system.

[Paramter explanation]

N/A

[Command mode]

Privileged EXEC mode.

[Application guide]

Configure the IP address and mask of the system.

[Explanation of command execution echo]

set command success

please execute "write" to save!

[Example]

- Raisecom#**ipaddr 192.168.223.89 mask 255.225.255.0**

[Related command]

## 5.10. loopback-detection (enable|disable) e1-port-list

**({1-16}|all)**

[Function explanation]

Enable or disable loopback detection function of E1 interface

[Command mode]

loopback-detection (enable|disable) e1-port-list ({1-16}|all)

[Parameter explanation]

[Default status]

N/A

[Command mode]

User EXEC mode; Privileged EXEC mode; Global configuration mode

[Explanation of command execution echo]

RAISECOM(config)# loopback-detection enable e1-port-list 1

## 5.11. loopback-detection (enable|disable) ethernet-port-list

**({1-16}|all)**

[Function explanation]

Enable or disable loopback detection function of Ethernet interface

[Command mode]

loopback-detection (enable|disable) ethernet-port-list ({1-16}|all)

[Parameter explanation]

[Default status]

N/A

[Command mode]

User EXEC mode; Privileged EXEC mode; Global configuration mode

[Explanation of command execution echo]

RAISECOM(config)# loopback-detection enable ethernet-port-list 1

## 5.12. mgmt-port <1-8>

[Function explanation]

Set the management interface

[Command mode]  
    mgmt-port <1-8>  
[Parameter explanation]

[Default status]  
    N/A

[Command mode]  
    Global configuration mode  
[Explanation of command execution echo]  
RAISECOM(config)# mgmt-port 1

### 5.13. modify map NAME trunk [channel {1-16}]

[Function explanation]  
Modify a map between a trunk interface and channel.

[Command mode]  
    modif map NAME trunk [channel {1-16}]

[Parameter explanation]

[Default status]  
    N/A

[Command mode]  
    Global configuration mode  
[Explanation of command execution echo]  
    raisecom(config)#modify map aa trunk channel 1  
    set command success..

### 5.14. modify map NAME ethernet {1-8} [trunk] [channel {1-16}]

[Function explanation]  
Modify a map between Ethernet interface and the channel

[Command mode]  
    add map NAME ethernet {1-8} [trunk] [channel {1-16}]

[Parameter explanation]

[Default status]  
    N/A

[Command mode]  
    Global configuration mode  
[Explanation of command execution echo]  
    RAISECOM(config)# modify map abc eth 1 channel 2  
    set command success.

## 5.15. no channel

[Function explanation]

Delete a channel

[Command mode]

no channel <1-16>

[Parameter explanation]

[Default status]

N/A

[Command mode]

Global configuration mode

[Explanation of command execution echo]

raisecom(config)#no channel 1  
set command success.

## 5.16. no err-auto-shutdown <1-16>

[Function explanation]

Disable the error bit auto shutdown function, that is to say the transmission channel will not be shutdown if there are error bits

[Command mode]

no err-auto-shutdown <1-16>

[Parameter explanation]

[Default status]

N/A

[Command mode]

Global configuration mode

[Explanation of command execution echo]

raisecom(config)#no err-auto-shutdown 1  
set command success.

## 5.17. no map NAME

[Function explanation]

Delete a map

[Command mode]

no map NAME

[Parameter explanation]

[Default status]



N/A  
[Command mode]  
Global configuration mode  
[Explanation of command execution echo]  
RAISECOM(config)# no map 111

## 5.18. No mgmt-port <1-8>

[Function explanation]  
Delete the management interface  
[Command mode]  
No mgmt-port <1-8>  
[Paramter explanation]  
  
[Default status]  
N/A  
[Command mode]  
Global configuration mode  
[Explanation of command execution echo]  
RAISECOM(config)# no mgmt-port 1

## 5.19. no trunk

**\*note: the trunk interface cannot be deleted if it is in a map.**

[Command mode]  
no trunk  
[Paramter explanation]  
  
[Default status]  
N/A  
[Command mode]  
Global configuration mode  
[Explanation of command execution echo]  
raisecom(config)#no trunk  
set command success.

## 5.20. no user USERNAME

[Function explanation]

Delete a user .

**no user** USERNAME

[Parameter explanation]

- USERNAME the name of the user

[Default status]

command 的 Default status;

[Command mode]

Privileged EXEC mode.

[Application guide]

Only a user whose privilege is 15 can use this command, and there must be user whose privilege is 15.

[Explanation of command execution echo]

- You have no enough right to change user information !

Information showed when a user whose privilege is less than 15 but wants to create a new user. Only privilege 15 user can use this command.

[Example]

- Delete a user whose name is abc  
Raisecom# **no user** abc

[Related command]

command	description
<b>user</b>	Change the privilege of the user
<b>privilege</b>	

## 5.21. password

[Function explanation]

Use **password** command to set the password of a user.

[Paramter explanation]

[Default status]

[Command mode]  
Privileged EXEC mode.

[Application guide]

[Explanation of command execution echo]

[Example]  
Raisecom(config)#pass  
Please input password:  
Please input again:  
set sucessfully!  
please execute "write" to save!

[Related command]

command	description
<b>user</b>	Add a new user and set the password
<b>show user</b>	显示用户的信息

## 5.22. remote interfaceconvert <1-16>

[Function explanation]  
Enter remote interface converter configuration mode

[Command mode]

remote <1-16>

[Paramter explanation]

[Default status]

N/A

[Command mode]

Global configuration mode

[Explanation of command execution echo]

RAISECOM(config)# remote interfaceconert 1  
RAISECOM(conifg-RC952FEE1/1)#

## 5.23. remote (rc952fee1|rc952fxe1|rc953fe8e1|rc953fx8e1)

<1-16>

[Function explanation]

Enter remote (rc952fee1|rc952fxe1|rc953fe8e1|rc953fx8e1) configuration mode.

[Command mode]

```
remote (rc952fee1|rc952fxe1|rc953fe8e1|rc953fx8e1) <1-16>
```

[Parameter explanation]

[Default status]

N/A

[Command mode]

Global configuration mode

[Explanation of command execution echo]

```
RAISECOM(config)# remote rc952fxe1 1
RAISECOM(config-RC952FXE1/1)#
```

## 5.24. show loopback-detection (ethernet|e1)

[Function explanation]

Show loopback detection configuration information of Ethernet interface or E1 interface

[Command mode]

```
show loopback-detection (ethernet|e1)
```

[Parameter explanation]

[Default status]

N/A

[Command mode]

User EXEC mode; Privileged EXEC mode; Global configuration mode

[Explanation of command execution echo]

```
RAISECOM(config)# show loopback-detection ethernet
Ethernet port 1:
  Config State:enable
  Running State:No Loop
Ethernet port 2:
  Config State:enable
  Running State:No Loop
Ethernet port 3:
```

```

Config State:enable
Running State:No Loop
Ethernet port 4:
Config State:enable
Running State:No Loop
Ethernet port 5:
Config State:enable
Running State:No Loop
Ethernet port 6:
Config State:enable
Running State:No Loop
Ethernet port 7:
Config State:enable
Running State:No Loop
Ethernet port 8:
Config State:enable
Running State:No Loop
    
```

### 5.25. show map

```

[Function explanation]
Show map configuration information
[Command mode]
show map
[Paramter explanation]
    
```

```

[Default status]
N/A
    
```

```

[Command mode]
User EXEC mode; Privileged EXEC mode;Global configuration
mode
    
```

```

[Explanation of command execution echo]
raisecom(config)#show map
    
```

Channel	E1 List	E1 Linked	Err-AutoShutdown
1	1-8	1-8	disable
2	9-16	1,3-8	disable
TRUNK:	Ethernet List		
	2-8		
Name	Ethernet List	Channel List	Trunk List
aa	1	1	exclude
abc	1	2	exclude

## 5.26. show user

[Function explanation]

Show user information of the system

**show user**

[Paramter explanation]

[Command mode]

Privileged EXEC mode.

[Application guide]

Use this command check how many users can login this system. All the user information is in user.txt file.

[Explanation of command execution echo]

[Example]

- Raisecom#**show user**

```

      User name      priority
      -----
      admin          15
      factory        15
  
```

[Related command]

command	description
<b>user</b>	Add a user and set the password
<b>user privilege</b>	Configure the user privilege

## 5.27. snmp

[Function explanation]

Enter SNMP configuration mode

[Command mode]

snmp

[Paramter explanation]

N/A

[Default status]

N/A  
 [Command mode]  
 Global configuration mode  
 [Explanation of command execution echo]  
 RAISECOM(config)#  
 RAISECOM(config-snmp)#

## 5.28. user USERNAME password PASSWORD

[Function explanation]  
 Add a user and configure the password

**user USERNAME password PASSWORD**

**no user USERNAME**

[Parameter explanation]

- USERNAME user name
- **password** password key word
- PASSWORD password

[Default status]

- command 的 Default status;
- Default user name of this command is “raisecom”;
  - Default user privilege of this command is 15, please user privilege command to change the user privilege;
  - Default password of this command is “raisecom”, please use “password” command to change the password;

[Command mode]

Privileged EXEC mode.

[Application guide]

There must be one user whose privilege is 15;

Only users whose privilege is 15 can use this command;

[Explanation of command execution echo]

- You have no enough right to change user information !

Information showed when the users whose privilege is less than 15 want to use this command.

- set successfully!

Information showed when the command executed successfully

- set fail!

Information showed when the command executed unsuccessfully

[Example]

- Add a user whose name is abca and password is 123  
Raisecom# **user** abc **password** 123
- Delete a user whose name is abc  
Raisecom# **no user** abc

[Related command]

command	description
<b>user privilege</b>	Change the privilege of the user

## 5.29. user USERNAME privilege <1-15>

[Function explanation]

Use this command change the user privilege

**user USERNAME privilege <1-15>**

[Paramter explanation]

USERNAME name  
<1-15> privilege

[Default status]

Default privilege of a user is 15

[Command mode]

Privileged EXEC mode;

[Application guide]

If some user's privilege need to be limited to forbid him execute some commands, this command can be used, and only manager whose privilege is 15 can use this command.

[Explanation of command execution echo]

*set successfully.*

Information showed when the privilege of special user set successfully

*can not change user privilege !*

Information showed when the privilege of special user set unsuccessfully



*You have no enough right to change user information !*  
Information showed when present user's privilege is not 15

[Example]

- Raisecom# **user abc privilege 4**

[Related command]

command	description
<b>user</b>	Add a user and configure the password
<b>show user</b>	Show user information

## 6. Interface E1 commands

### 6.1. bert (enable|disable)

[Function explanation]

Enable or disable bit error rate test (BERT) function

[Command mode]

bert (enable|disable)

[Parameter explanation]

[Default status]

N/A

[Command mode]

Interface e1 configuration mode

[Explanation of command execution echo]

RAISECOM(config-e1/1)# bert enable

### 6.2. clock-mode (master|slave)

[Function explanation]

Configure the clock mode

[Command mode]

clock-mode(master|slave)

[Parameter explanation]

[Default status]

N/A

[Command mode]

Interface e1 configuration mode

[Explanation of command execution echo]

RAISECOM(config-e1/1)# clock-mode master

### 6.3. crc-auto (enable|disable)

[Function explanation]

Enable or disable the CRC function

[Command mode]

crc-auto (enable|disable)

[Paramter explanation]  
  
[Default status]  
N/A  
[Command mode]  
Interface e1 configuration mode  
[Explanation of command execution echo]  
RAISECOM(config-e1/1)# crc enable

## 6.4. description STRING

[Function explanation]  
Configure the description of E1 interface  
[Command mode]  
description STRING  
[Paramter explanation]  
  
[Default status]  
N/A  
[Command mode]  
Interface e1 configuration mode  
[Explanation of command execution echo]  
RAISECOM(config-e1/1)# description haidian

## 6.5. frame

[Function explanation]  
Configure the E1 as frame E1 mode  
[Command mode]  
frame  
[Paramter explanation]  
  
[Default status]  
N/A  
[Command mode]  
Interface e1 configuration mode  
[Explanation of command execution echo]  
RAISECOM(config-e1/1)# frame

## 6.6. interface e1 <1-16>

[Function explanation]  
Enter other E1 interface configuration mode  
[Command mode]  
interface e1 <1-16>  
[Paramter explanation]  
  
[Default status]  
N/A  
[Command mode]  
Global configuration mode  
[Explanation of command execution echo]  
RAISECOM(config-e1/1)# interface e1 2  
RAISECOM(config-e1/2)#

## 6.7. loopback

\* Note: when enable loop back test on one E1 interface, please make sure that all E1 interfaces in a same transmission channel are disconnected

[Function explanation]  
Enable or disable loop back function  
[Command mode]  
loopback  
[Paramter explanation]  
  
[Default status]  
N/A  
[Command mode]  
Interface e1 configuration mode  
[Explanation of command execution echo]  
RAISECOM(config-e1/1)# loopback

## 6.8. no loopback

[Function explanation]  
Disable loop back test

[Command mode]  
no loopback  
[Parameter explanation]  
  
[Default status]  
N/A  
[Command mode]  
Interface e1 configuration mode  
[Explanation of command execution echo]  
RAISECOM(config-e1/1)#no loopback

## 6.9. no remote-e1-loopback

[Function explanation]  
Disable remote loop back function  
[Command mode]  
no remote-e1-loopback  
[Parameter explanation]  
  
[Default status]  
N/A  
[Command mode]  
Interface e1 configuration mode  
[Explanation of command execution echo]  
RAISECOM(config-e1/1)# no remote-e1-loopback

## 6.10. remote-e1-loopback

[Function explanation]  
Start remote E1 loop back test  
[Command mode]  
remote-e1-loopback  
[Parameter explanation]  
  
[Default status]  
N/A  
[Command mode]  
Interface e1 configuration mode  
[Explanation of command execution echo]  
RAISECOM(config-e1/1)# remote-e1-loopback

## 6.11. remote e1

[Function explanation]  
Enter interface E1 configuration mode of remote device  
[Command mode]  
bert (enable|disable)  
[Paramter explanation]  
  
[Default status]  
N/A  
[Command mode]  
Interface e1 configuration mode  
[Explanation of command execution echo]  
raisecom(config-E1/1)#remote e1  
raisecom(config-RC953FX8E1/1-E1/1)#

## 6.12. show interface [<1-16>]

[Function explanation]  
Show E1 interface status  
[Command mode]  
show interface [<1-16>]  
[Paramter explanation]  
  
[Default status]  
N/A  
[Command mode]  
Interface e1 configuration mode;  
[Explanation of command execution echo]  
  
raisecom(config-E1/1)#show interface  
E1:1  
Basic Info:  
Description:raisecomE1-1  
Clock Mode:master  
Frame Mode:framed  
Frame timeslot:0-31  
Frame CRC State:disable  
Frame CRC Autonegotiation:disable  
Flow control:OFF  
remote deviceID:1 remote E1ID:1

## Maintenance:

Loopback(config):disable  
remote-e1-loopback(config):disable  
Bert:disable

## Packet Statistics:

TX Packet Number:196  
RX Packet Number:6559  
RX Error Packet Number:217

## Performance Statistics:

Error Second:15  
Serious Error Second:15  
Bit Error Rate: Zero

## Fault State:

LOS:Normal  
AIS:Normal  
LOF:Normal  
CRC:Normal  
GIDERR:Normal

## 6.13. timeslot {1-31}

[Function explanation]

Time slot allocation

[Command mode]

Timeslot {1-31}

[Paramter explanation]

[Default status]

N/A

[Command mode]

Interface e1 configuration mode

[Explanation of command execution echo]

RAISECOM(config-e1/1)#timeslot 1-6

## 6.14. unframe

[Function explanation]

Configure the E1 interface as unframed mode

[Command mode]

unframe

[Paramter explanation]

[Default status]

N/A

[Command mode]

Interface e1 configuration mode

[Explanation of command execution echo]

RAISECOM(config-e1/1)# unframe



## 7. Interface Ethernet mode commands

### 7.1. flow-control (on|off)

[Function explanation]

Enable or disable flow control function on Ethernet interface

[Command mode]

Flow-control (on|off)

[Paramter explanation]

[Default status]

N/A

[Command mode]

Interface Ethernet configuration mode

[Explanation of command execution echo]

Raisecom(config-eth/1)#flow-control on

### 7.2. interface ethernet <1-8>

[Function explanation]

Enter other Ethernet interface configuration mode

[Command mode]

interface ethernet <1-8>

[Paramter explanation]

[Default status]

N/A

[Command mode]

Global configuration mode

[Explanation of command execution echo]

RAISECOM(conifg-ethernet/1)# interface ethernet 2

RAISECOM(conifg-ethernet/2)#

### 7.3. no shutdown

[Function explanation]

Enable the Ethernet interface

[Command mode]

No shutdown  
[Paramter explanation]  
  
[Default status]  
N/A  
[Command mode]  
Interface Ethernet configuration mode  
[Explanation of command execution echo]  
Raisecom(config-eth/1)# no shutdown

## 7.4. reset-statistics

[Function explanation]  
Reset the statistics counter  
[Command mode]  
reset-statistics  
[Paramter explanation]  
  
[Default status]  
N/A  
[Command mode]  
Interface Ethernet configuration mode  
[Explanation of command execution echo]  
Raisecom(config-eth/1)# reset-statistics

## 7.5. show interface [<1-8>]

[Function explanation]  
Show the Ethernet interface status  
[Command mode]  
show interface [<1-8>]  
[Paramter explanation]  
  
[Default status]  
N/A  
[Command mode]  
Interface Ethernet configuration mode 下  
[Explanation of command execution echo]  
RAISECOM# show interface  
Port 1:  
Basic Info:  
Linkstatus:down

```
speed-duplex: 10M-half
Manage port:On
Config Info:
Port Switch:On
Auto negotiate:enable
auto-MDIX:enable
flowcontrol:ON
```

```
Performance Statistics:
TX Packet Number:0
TX Bytes Number:0
RX Packet Number:0
RX Bytes Number:0
RX Lost Packet Number:0
Collision Number:0
```

## 7.6. shutdown

```
[Function explanation]
Shutdown the Ethernet interface
[Command mode]
shutdown
[Paramter explanation]

[Default status]
N/A
[Command mode]
Interface Ethernet configuration mode
[Explanation of command execution echo]
Raisecom(config-eth/1)# shutdown
```

## 7.7. speed auto

```
[Function explanation]
Start the auto negotiation
[Command mode]
speed auto
[Paramter explanation]

[Default status]
```

N/A

[Command mode]

Interface Ethernet configuration mode

[Explanation of command execution echo]

Raisecom(config-eth/1)# speed auto

## 7.8. speed (100|10) duplex (full |half )

[Function explanation]

Configure the speed of Ethernet interface as 10M or 100M, the duplex mode as full duplex and half duplex

[Command mode]

speed (100|10) duplex ( full | half )

[Parameter explanation]

[Default status]

N/A

[Command mode]

Interface Ethernet configuration mode

[Explanation of command execution echo]

Raisecom(config-eth/1)#speed 100 duplex full

## 8. Remote RC952-FEE1 mode command

### 8.1. fault-pass (enable|disable)

[Function explanation]

Enable or disable fault-pass-through function

[Command mode]

fault-pass (enable|disable)

[Paramter explanation]

[Default status]

N/A

[Command mode]

Remote RC952-FEE1 configuration mode

[Explanation of command execution echo]

raisecom(config-RC952FEE1/1) # fault-pass enable

### 8.2. interface e1

[Function explanation]

Enter interface E1 configuration mode of remote RC952-FEE1

[Command mode]

interface e1

[Paramter explanation]

[Default status]

N/A

[Command mode]

Remote RC952-FEE1 configuration mode

[Explanation of command execution echo]

Raisecom(config-RC952FEE1/1)# interface e1

### 8.3. interface ethernet

[Function explanation]

Enter interface Ethernet configuration mode of remote RC952-FEE1

[Command mode]

interface ethernet  
[Paramter explanation]  
  
[Default status]  
N/A  
[Command mode]  
Remote RC952-FEE1 configuration mode  
[Explanation of command execution echo]  
Raisecom(config-RC952FEE1/1)# interface ether

#### 8.4. remote interfaceconvert <1-16>

[Function explanation]  
Enter other remote converters' interface E1 configuration mode  
[Command mode]  
remote <1-16>  
[Paramter explanation]  
  
[Default status]  
N/A  
[Command mode]  
Global configuration mode  
[Explanation of command execution echo]  
RAISECOM(conifg-RC952FEE1/1)# remote interfaceconert 2  
RAISECOM(conifg-RC952FEE1/2)#

#### 8.5. reset

[Function explanation]  
Reset remote RC952-FEE1  
[Command mode]  
reset  
[Paramter explanation]  
  
[Default status]  
N/A  
[Command mode]  
Remote RC952-FEE1 configuration mode  
[Explanation of command execution echo]  
Raisecom(config-RC952FEE1/1)# reset

## 8.6. show device

[Function explanation]

Show device information

[Command mode]

show device

[Parameter explanation]

[Default status]

N/A

[Command mode]

User EXEC mode; Privileged EXEC mode; Remote RC952-FEE1  
configuration mode

[Explanation of command execution echo]

raisecom(config-RC952FEE1/1)#show device

Device 1:RC952FEE1

Basic Running Info:

Management Operation Status:Slave

version:A.0-0.0-E0

Optical Module Type:noexist

Fault-pass:disable

Basic Config Info:

Fault-pass:disable

## 9. Commands in interface e1 configuration mode of remote RC952-FEE1

### 9.1. clock-mode (master|slave)

[Function explanation]

Configure the clock mode of remote RC952-FEE1

[Command mode]

clock-mode (master|slave)

[Parameter explanation]

[Default status]

N/A

[Command mode]

Interface E1 configuration mode of remote RC952-FEE1

[Explanation of command execution echo]

RAISECOM(config-RC952FEE1/1-E1)# clock-mode master

### 9.2. crc-auto (enable|disable)

[Function explanation]

Enable or disable CRC function

[Command mode]

crc-auto (enable|disable)

[Parameter explanation]

[Default status]

N/A

[Command mode]

Interface E1 configuration mode of remote RC952-FEE1

[Explanation of command execution echo]

RAISECOM(config-RC952FEE1/1-E1)# crc-auto (enable|disable)



### 9.3. show interface

[Function explanation]

Show E1 interface status of remote RC952-FEE1

[Command mode]

show interface

[Paramter explanation]

[Default status]

N/A

[Command mode]

Interface E1 configuration mode of remote RC952-FEE1

[Explanation of command execution echo]

RAISECOM(config-RC952FEE1/1-E1)# show interface

Port 1:RC952FEE1

Basic Running Info:

Clock Mode:slave

Frame Mode:framed

Frame timeslot:0

Frame CRC autonegotiation:disable

Frame CRC Check:disable

Basic Config Info:

Clock Mode:slave

Frame Mode:unframed

Frame timeslot:N/A

Frame CRC autonegotiation:disable

Packet Statistics:

TX Packet Number:0

RX Packet Number:0

RX Error Packet Number:0

Fault State:

LOS:Normal

AIS:Normal

LOF:Normal

CRC:Normal

## 10. Commands in interface Ethernet configuration mode of remote RC952-FEE1

### 10.1. flow-control (on|off)

[Function explanation]  
Enable or disable flow control function

[Command mode]  
Flow-control (on|off)

[Parameter explanation]

[Default status]  
N/A

[Command mode]  
Interface Ethernet configuration mode of remote RC952-FEE1

[Explanation of command execution echo]  
RAISECOM(config-RC952FEE1/1-ethernet)#flow-control on

### 10.2. no shutdown

[Function explanation]  
Enable the Ethernet interface of remote RC952-FEE1

[Command mode]  
No shutdown

[Parameter explanation]

[Default status]  
N/A

[Command mode]  
Interface Ethernet configuration mode of remote RC952-FEE1

[Explanation of command execution echo]  
RAISECOM(config-RC952FEE1/1-ethernet)# no shutdown

### 10.3. show interface

[Function explanation]  
Show Ethernet interface status of remote RC952-FEE1

[Command mode]  
show interface  
[Parameter explanation]  
  
[Default status]  
N/A  
[Command mode]  
User EXEC mode; Privileged EXEC mode; remote rc952fee1 下的  
Interface Ethernet configuration mode;  
[Explanation of command execution echo]  
RAISECOM(config-RC952FEE1/1-ethernet)#show interface  
Port 1:RC952FEE1  
Basic Info:  
Port:Disable  
Linkstatus:Down  
Autonegotiation:disable  
speed-duplex: 10M-half  
flowcontrol:OFF  
Config Info:  
Port:Disable  
Speed:10M  
Duplex:half  
flowcontrol:OFF  
  
Ethernet Performance Statistics:  
TX Packet Number:0  
RX Packet Number:0  
RX Error Packet Number:0

## 10.4. shutdown

[Function explanation]  
Shutdown the Ethernet interface  
[Command mode]  
shutdown  
[Parameter explanation]  
  
[Default status]  
N/A  
[Command mode]  
Interface Ethernet configuration mode of remote RC952-FEE1  
[Explanation of command execution echo]

RAISECOM(config-RC952FEE1/1-ethernet)# shutdown

## 10.5. speed auto

[Function explanation]

Enable auto negotiation function of Ethernet interface

[Command mode]

speed auto

[Paramter explanation]

[Default status]

N/A

[Command mode]

Interface Ethernet configuration mode of remote RC952-FEE1

[Explanation of command execution echo]

RAISECOM(config-RC952FEE1/1-ethernet)# speed auto

## 10.6. speed (100|10) duplex (full |half )

[Function explanation]

Configure the speed and duplex mode of remote RC952-FEE1 Ethernet interface

[Command mode]

speed (100|10) duplex ( full | half )

[Paramter explanation]

[Default status]

N/A

[Command mode]

Interface Ethernet configuration mode of remote RC952-FEE1

[Explanation of command execution echo]

RAISECOM(config-RC952FEE1/1-ethernet)#speed 100 duplex full

## 11. Commands in remote RC952-FXE1

### 11.1. interface e1

[Function explanation]

Enter interface E1 configuration mode of remote RC952-FXE1

[Command mode]

interface e1

[Parameter explanation]

[Default status]

N/A

[Command mode]

Remote RC952-FXE1 configuration mode

[Explanation of command execution echo]

RAISECOM(config-RC952FXE1/1)# interface e1

### 11.2. interface fx-ethernet

[Function explanation]

Enter interface Ethernet configuration mode of remote RC952-FXE1

[Command mode]

interface fx-ethernet

[Parameter explanation]

[Default status]

N/A

[Command mode]

Remote RC952-FXE1 configuration mode

[Explanation of command execution echo]

RAISECOM(config-RC952FXE1/1)# interface fx-ethernet

### 11.3. remote interfaceconvert <1-16>

[Function explanation]

Enter other remote RC952-FXE1 configuration mode

[Command mode]

remote <1-16>

[Parameter explanation]

[Default status]

N/A

[Command mode]

Global configuration mode

[Explanation of command execution echo]

RAISECOM(config-RC952FXE1/1)# remote interfaceconert 2

RAISECOM(config-RC952FXE1/2)#

## 11.4. reset

[Function explanation]

Restart the device

[Command mode]

reset

[Parameter explanation]

[Default status]

N/A

[Command mode]

Remote RC952-FXE1 configuration mode

[Explanation of command execution echo]

RAISECOM(config-RC952FXE1/1)# reset

## 11.5. show device

[Function explanation]

Show basic device information of remote RC952-FXE1

[Command mode]

show device

[Parameter explanation]

[Default status]

N/A

[Command mode]

User EXEC mode; Privileged EXEC mode; Remote RC952-FXE1 configuration mode

[Explanation of command execution echo]

RAISECOM(config-RC952FXE1/1)# show device

Device 1:RC952FXE1

Basic Running Info:

Management Operation Status:Slave

version:A.0-0.0-E0

Optical Module Type:noexist

## 12. Commands in interface E1 configuration mode of remote RC952-FXE1

### 12.1. clock-mode (master|slave)

[Function explanation]

Configure the clock mode of E1 interface

[Command mode]

clock-mode (master|slave)

[Parameter explanation]

[Default status]

N/A

[Command mode]

Interface E1 configuration mode of remote RC952-FXE1

[Explanation of command execution echo]

RAISECOM(config-RC952FXE1/1-E1)# clock-mode master

### 12.2. crc-auto (enable|disable)

[Function explanation]

Enable or disable CRC function

[Command mode]

crc-auto (enable|disable)

[Parameter explanation]

[Default status]

N/A

[Command mode]

Interface E1 configuration mode of remote RC952-FXE1

[Explanation of command execution echo]

RAISECOM(config-RC952FXE1/1-E1)# crc-auto (enable|disable)



## 12.3. show interface

[Function explanation]

Show E1 interface status of remote RC952-FXE1

[Command mode]

show interface

[Paramter explanation]

[Default status]

N/A

[Command mode]

Interface E1 configuration mode of remote RC952-FXE1

[Explanation of command execution echo]

RAISECOM(config-RC952FXE1/1-E1)# show interface

Port 1:RC952FXE1

Basic Running Info:

Clock Mode:slave

Frame Mode:framed

Frame timeslot:0

Frame CRC autonegotiation:disable

Frame CRC Check:disable

Basic Config Info:

Clock Mode:slave

Frame Mode:unframed

Frame timeslot:N/A

Frame CRC autonegotiation:disable

Packet Statistics:

TX Packet Number:0

RX Packet Number:0

RX Error Packet Number:0

Fault State:

LOS:Normal

AIS:Normal

LOF:Normal

CRC:Failure

## 13. Commands in interface fx-ethernet configuration mode of remote RC952-FXE1

### 13.1. flow-control (on|off)

[Function explanation]  
Enable or disable flow control function of Ethernet interface

[Command mode]  
Flow-control (on|off)

[Paramter explanation]

[Default status]  
N/A

[Command mode]  
Interface Ethernet configuration mode of remote RC952-FXE1

[Explanation of command execution echo]  
RAISECOM(config-RC952FXE1/1-fx-ethernet)#flow-control on

### 13.2. show interface

[Function explanation]  
Show Ethernet interface status of remote RC952-FXE1

[Command mode]  
show interface

[Paramter explanation]

[Default status]  
N/A

[Command mode]  
User EXEC mode; Privileged EXEC mode; Interface Ethernet configuration mode of remote RC952-FXE1;

[Explanation of command execution echo]  
RAISECOM(config-RC952FXE1/1-fx-ethernet)# show interface  
Port 1:RC952FXE1  
Basic Info:  
Tx Link:Down  
Rx Link:Down

flowcontrol:OFF

Config Info:

flowcontrol:OFF

Ethernet Performance Statistics:

TX Packet Number:0

RX Packet Number:0

RX Error Packet Number:0

## 14. Commands in remote RC953-FE8E1 configuration mode

### 14.1. fault-pass (enable|disable)

[Function explanation]

Enable or disable fault-pass-through function of the Ethernet interface

[Command mode]

fault-pass (enable|disable)

[Parameter explanation]

[Default status]

N/A

[Command mode]

Remote RC953-FE8E1 configuration mode

[Explanation of command execution echo]

raisecom(config-RC953FE8E1/1) # fault-pass enable

### 14.2. interface e1 <1-8>

[Function explanation]

Enable interface E1 configuration mode of remote RC953-FE8E1

[Command mode]

interface e1

[Parameter explanation]

[Default status]

N/A

[Command mode]

Remote RC953-FE8E1 configuration mode

[Explanation of command execution echo]

RAISECOM(config-RC953FE8E1/1)# interface e1 1

### 14.3. interface ethernet

[Function explanation]

Enable interface Ethernet configuration mode of remote RC953-FE8E1  
[Command mode]  
interface ethernet  
[Paramter explanation]  
  
[Default status]  
N/A  
[Command mode]  
Remote RC953-FE8E1 configuration mode  
[Explanation of command execution echo]  
RAISECOM(config-RC953FE8E1/1)# interface ethernet

#### 14.4. remote interfaceconvert <1-16>

[Function explanation]  
Enter other remote interface converter configuration mode.  
[Command mode]  
remote <1-16>  
[Paramter explanation]  
  
[Default status]  
N/A  
[Command mode]  
Global configuration mode  
[Explanation of command execution echo]  
RAISECOM(conifg-RC953FE8E1/1)# remote interfaceconert 2  
RAISECOM(conifg-RC953FE8E1/2)#

#### 14.5. reset

[Function explanation]  
Reset the remote RC953-FE8E1  
[Command mode]  
reset  
[Paramter explanation]  
  
[Default status]  
N/A  
[Command mode]  
Remote RC953-FE8E1 configuration mode  
[Explanation of command execution echo]

RAISECOM(config-RC953FE8E1/1)# reset

## 14.6. show device

[Function explanation]

Show the basic device information of remote RC953-FE8E1

[Command mode]

show device

[Paramter explanation]

[Default status]

N/A

[Command mode]

Remote RC953-FE8E1 configuration mode

[Explanation of command execution echo]

raisecom(config-RC953FE8E1/2)#show device

Device 2:RC953FE8E1

Basic Running Info:

Management Operation Status:Slave

version:A.1-1.0-E0

Optical Module Type:noexist

Fault Pass:disable

Basic Config Info:

Fault Pass:disable

## 15. Commands in interface E1 configuration mode of remote RC953-FE8E1

### 15.1. clock-mode (master|slave)

[Function explanation]

Configure the clock mode of E1 interface

[Command mode]

clock-mode (master|slave)

[Parameter explanation]

[Default status]

N/A

[Command mode]

Interface E1 configuration mode of remote RC953-FE8E1

[Explanation of command execution echo]

```
raisecom(config-RC953FE8E1/1-E1/1)#clock-mode master
set command success
```

### 15.2. crc-auto (enable|disable)

[Function explanation]

Enable or disable CRC function of E1 interface

[Command mode]

crc-auto (enable|disable)

[Parameter explanation]

[Default status]

N/A

[Command mode]

Interface E1 configuration mode of remote RC953-FE8E1

[Explanation of command execution echo]

```
RAISECOM(config-RC953FE8E1/1-E1/1)# crc-auto enable
set command success
```

### 15.3. show interface

[Function explanation]

Show the interface configuration information

[Command mode]

show interface

[Parameter explanation]

[Default status]

N/A

[Command mode]

Interface E1 configuration mode of remote RC953-FE8E1

[Explanation of command execution echo]

```
raisecom(config-RC953FE8E1/1-E1/1)#show interface
```

```
Device 1:RC953FE8E1 E1port-1
```

```
Basic Running Info:
```

```
  Clock Mode:master
```

```
  Frame Mode:framed
```

```
  Frame timeslot:0-31
```

```
  Frame CRC autonegotiation:enable
```

```
  Frame CRC Check:enable
```

```
Basic Config Info:
```

```
  Clock Mode:master
```

```
  Frame Mode:unframed
```

```
  Frame timeslot:N/A
```

```
  Frame CRC autonegotiation:enable
```

```
Packet Statistics:
```

```
  TX Packet Number:0
```

```
  RX Packet Number:7
```

```
  RX Error Packet Number:0
```

```
Fault State:
```

```
  LOS:Normal
```

```
  AIS:Normal
```

```
  LOF:Normal
```

```
  CRC:Normal
```



## 16. Commands in interface Ethernet configuration mode of remote RC953-FE8E1

### 16.1. flow-control (on|off)

[Function explanation]

Enable or disable the flow control function

[Command mode]

Flow-control (on|off)

[Parameter explanation]

[Default status]

N/A

[Command mode]

Interface Ethernet configuration mode of remote RC953-FE8E1

[Explanation of command execution echo]

RAISECOM(config-RC953FE8E1/1-ethernet)#flow-control on

### 16.2. no shutdown

[Function explanation]

Enable the Ethernet interface

[Command mode]

No shutdown

[Parameter explanation]

[Default status]

N/A

[Command mode]

Interface Ethernet configuration mode of remote RC953-FE8E1

[Explanation of command execution echo]

RAISECOM(config-RC953FE8E1/1-ethernet)# no shutdown

### 16.3. show interface

[Function explanation]

Show the Ethernet interface configuration information

[Command mode]  
show interface  
[Parameter explanation]  
  
[Default status]  
N/A  
[Command mode]  
User EXEC mode; Privileged EXEC mode; Interface Ethernet configuration mode of remote RC953-FE8E1;  
[Explanation of command execution echo]  
raisecom(config-RC953FE8E1/2-ethernet)#show interface  
Device 2:RC953FE8E1  
Basic Info:  
Port:Enable  
Linkstatus:Down  
Autonegotiation:enable  
speed-duplex: 10M-half  
flowcontrol:OFF  
Config Info:  
Port:Enable  
Speed:Autonegotiation  
flowcontrol:OFF  
  
Ethernet Performance Statistics:  
TX Packet Number:16777215  
RX Packet Number:5570560  
RX Lost Packet Number:0

## 16.4. shutdown

[Function explanation]  
Shutdown the Ethernet interface  
[Command mode]  
shutdown  
[Parameter explanation]  
  
[Default status]  
N/A  
[Command mode]  
Interface Ethernet configuration mode of remote RC953-FE8E1  
[Explanation of command execution echo]  
RAISECOM(config-RC953FE8E1/1-ethernet)# shutdown

## 16.5. speed auto

[Function explanation]

Start auto negotiation of the Ethernet interface

[Command mode]

speed auto

[Parameter explanation]

[Default status]

N/A

[Command mode]

Interface Ethernet configuration mode of remote RC953-FE8E1

[Explanation of command execution echo]

RAISECOM(config-RC953FE8E1/1-ethernet)# speed auto

## 16.6. speed (100|10) duplex (full |half )

[Function explanation]

Configure the Speed and duplex mode the Ethernet interface

[Command mode]

speed (100|10) duplex ( full | half )

[Parameter explanation]

[Default status]

N/A

[Command mode]

Interface Ethernet configuration mode of remote RC953-FE8E1

[Explanation of command execution echo]

RAISECOM(config-RC953FE8E1/1-ethernet)#speed 100 duplex full

## 17. Commands in remote RC953-FX8E1 configuration mode

### 17.1. interface e1 <1-8>

[Function explanation]  
Enter interface E1 configuration mode of remote RC953-FX8E1  
[Command mode]  
interface e1  
[Paramter explanation]  
  
[Default status]  
N/A  
[Command mode]  
Remote RC953-FX8E1 configuration mode  
[Explanation of command execution echo]  
RAISECOM(config-RC953FX8E1/1)# interface e1 1

### 17.2. interface fx-ethernet

[Function explanation]  
Enter interface Ethernet configuration mode of remote RC953-FX8E1  
[Command mode]  
interface fx-ethernet  
[Paramter explanation]  
  
[Default status]  
N/A  
[Command mode]  
Remote RC953-FX8E1 configuration mode  
[Explanation of command execution echo]  
RAISECOM(config-RC953FX8E1/1)# interface fx-ethernet

### 17.3. remote interfaceconvert <1-16>

[Function explanation]

Enter other remote inverse multiplexer configuration mode

[Command mode]

remote <1-16>

[Paramter explanation]

[Default status]

N/A

[Command mode]

Global configuration mode

[Explanation of command execution echo]

RAISECOM(config-RC953FX8E1/1)# remote interfaceconert 2

RAISECOM(config-RC953FX8E1/2)#

### 17.4. reset

[Function explanation]

Reset remote RC953-FX8E1

[Command mode]

reset

[Paramter explanation]

[Default status]

N/A

[Command mode]

Remote RC953-FX8E1 configuration mode

[Explanation of command execution echo]

RAISECOM(config-RC953FX8E1/1)# reset

### 17.5. show device

[Function explanation]

Show the basic configuration information of remote device

[Command mode]

show device

[Paramter explanation]

[Default status]

N/A

[Command mode]

User EXEC mode; Privileged EXEC mode; Remote RC952-FXE1 configuration mode

[Explanation of command execution echo]

raisecom(config-RC953FX8E1/1)#show device

Device 1:RC953FX8E1

Basic Running Info:

Management Operation Status:Slave

version:B.1-1.0-E0

Optical Module Type:noexist

## 18. Commands in interface E1 configuration mode of remote RC953-FX8E1

### 18.1. clock-mode (master|slave)

[Function explanation]

Configure the clock mode of E1

[Command mode]

clock-mode (master|slave)

[Parameter explanation]

[Default status]

N/A

[Command mode]

Interface E1 configuration mode of remote RC953-FX8E1

[Explanation of command execution echo]

raisecom(config-RC953FX8E1/1-E1/1)#clock-mode master  
set command success

### 18.2. crc-auto (enable|disable)

[Function explanation]

Enable or disable CRC function

[Command mode]

crc-auto (enable|disable)

[Parameter explanation]

[Default status]

N/A

[Command mode]

Interface E1 configuration mode of remote RC953-FX8E1

[Explanation of command execution echo]

RAISECOM(config-RC953FX8E1/1-E1/1)# crc-auto enable  
set command success

### 18.3. show interface

[Function explanation]

Show E1 interface status of remote RC953-FX8E1

[Command mode]

show interface

[Paramter explanation]

[Default status]

N/A

[Command mode]

Interface E1 configuration mode of remote RC953-FX8E1

[Explanation of command execution echo]

```
raisecom(config-RC953FX8E1/1-E1/1)#show interface
```

```
Device 1:RC953FX8E1 E1port-1
```

```
Basic Running Info:
```

```
  Clock Mode:master
```

```
  Frame Mode:framed
```

```
  Frame timeslot:0-31
```

```
  Frame CRC autonegotiation:enable
```

```
  Frame CRC Check:enable
```

```
Basic Config Info:
```

```
  Clock Mode:master
```

```
  Frame Mode:unframed
```

```
  Frame timeslot:N/A
```

```
  Frame CRC autonegotiation:enable
```

```
Packet Statistics:
```

```
  TX Packet Number:0
```

```
  RX Packet Number:7
```

```
  RX Error Packet Number:0
```

```
Fault State:
```

```
  LOS:Normal
```

```
  AIS:Normal
```

```
  LOF:Normal
```

```
  CRC:Normal
```



## 19. Commands in interface fx-ethernet configuration mode of remote RC953-FX8E1

### 19.1. flow-control (on|off)

[Function explanation]  
Enable the flow control function  
[Command mode]  
Flow-control (on|off)  
[Paramter explanation]  
  
[Default status]  
N/A  
[Command mode]  
Interface Ethernet configuration mode of remote RC953-FX8E1  
[Explanation of command execution echo]  
RAISECOM(config-RC953FX8E1/1-fx-ethernet)#flow-control on

### 19.2. show interface

[Function explanation]  
Show the Ethernet interface status of remote RC953-FX8E1  
[Command mode]  
show interface  
[Paramter explanation]  
  
[Default status]  
N/A  
[Command mode]  
User EXEC mode; Privileged EXEC mode; Interface Ethernet  
configuration mode of remote RC953-FX8E1;  
[Explanation of command execution echo]  
raisecom(config-RC953FX8E1/1-fxethernet)show int  
Port 1:RC953FX8E1  
Basic Info:  
Tx Link:Down  
Rx Link:Down

flowcontrol:OFF

Config Info:

flowcontrol:OFF

Ethernet Performance Statistics:

TX Packet Number:16777215

RX Packet Number:16711680

RX Lost Packet Number:0

## 20. Commands in SNMP configuration mode

### 20.1. show snmp

[Function explanation]

Show the configuration information of SNMP

[Command mode]

show snmp

[Paramter explanation]

[Default status]

N/A

[Command mode]

SNMP configuration mode

[Explanation of command execution echo]

RAISECOM(config-SNMP)# show snmp

System name: unknown

System description: RC951-8FE16E1

System contact: unknown

System location: unknown

System object id: 1.3.6.1.4.1.8886.2

Read Community:public

Write Community:private

Send trap status: Enable

Trap sink	Target Address	Target Port
1	0.0.0.0	162
2	0.0.0.0	162
3	0.0.0.0	162
4	0.0.0.0	162
5	0.0.0.0	162
6	0.0.0.0	162
7	0.0.0.0	162
8	0.0.0.0	162

### 20.2. snmp-server community COMMUNITY (ro/rw)

[Function explanation]

Configure SNMP community

[Command mode]

snmp-server community COMMUNITY (ro/rw)

[Parameter explanation]

[Default status]

N/A

[Command mode]

SNMP configuration mode

[Explanation of command execution echo]

RAISECOM(config-SNMP)#snmp-server community *public rw*

### 20.3. snmp-server contact SYSCONTACT

[Function explanation]

Configure the contacting address of the system. There can be 256 characters at most.

Generally speaking, we configure the E-mail address of the network administrator. And this address will be saved as standard MIB parameters.

[Command mode]

snmp-server contact *SYSCONTACT*

[Parameter explanation]

[Default status]

N/A

[Command mode]

SNMP configuration mode

[Explanation of command execution echo]

RAISECOM(config-SNMP)# snmp-server contact *SYSCONTACT*

### 20.4. snmp-server description STRING

[Function explanation]

Configure the description of the device; there can be 256 characters at most. And this configuration will be saved as standard MIB parameters.

[Command mode]

snmp-server description *STRING*

[Parameter explanation]

[Default status]

N/A

[Command mode]

SNMP configuration mode

[Explanation of command execution echo]

RAISECOM(config-SNMP)# snmp-server description STRING

## 20.5. snmp-server location SYSLOCATION

[Function explanation]

Configure the location of the device; there can be 256 characters at most. And this configuration will be saved as standard MIB parameters.

[Command mode]

snmp-server location *SYSLOCATION*

[Parameter explanation]

[Default status]

N/A

[Command mode]

SNMP configuration mode

[Explanation of command execution echo]

RAISECOM(config-SNMP)# snmp-server location *SYSLOCATION*

## 20.6. snmp-server name SYSNAME

[Function explanation]

Configure the system name of the device; there can be 256 characters at most. And this configuration will be saved as standard MIB parameters.

[Command mode]

snmp-server name *SYSNAME*

[Parameter explanation]

[Default status]

N/A

[Command mode]

SNMP configuration mode

[Explanation of command execution echo]

RAISECOM(config-SNMP)# snmp-server name *SYSNAME*

## 20.7. snmp-server trap (enable|disable)

[Function explanation]

Enable or disable the TRAP function

[Command mode]

```
snmp-server trap (enable|disable)
```

[Parameter explanation]

[Default status]

N/A

[Command mode]

SNMP configuration mode

[Explanation of command execution echo]

```
RAISECOM(config-SNMP)# snmp-server trap enable
```

## 20.8. snmp-server trap <1-8> target TARGET port PORT

[Function explanation]

Configure the TRAP server and the port number.

[Command mode]

```
snmp-server trap <1-8> target TARGET port PORT
```

[Parameter explanation]

[Default status]

N/A

[Command mode]

SNMP configuration mode

[Explanation of command execution echo]

```
RAISECOM(config-SNMP)# snmp-server trap 1 target  
192.168.223.1 port 162
```